

**9/23 Ann Street Wollri Creek NSW**

2 1 1

Add your own touches to this smart, easy and naturally light filled apartment, situated on the first floor of a double brick apartment complex, it provides a low care lifestyle in a prime location.

Combines bright airy interiors and a private leafy outlook to deliver an excellent low-maintenance property that's tucked away in Wollri creek's sought-after location. Offering an excellent lifestyle and convenience its walking distance to the Arncliffe and Wollri creek train station, bus transport and Wollri creek's vibrant cafes, restaurants and supermarket.

- both bedroom fitted with a built-in robes
- Main bedroom with own balcony
- Well-proportioned living space with floorboards
- Well-equipped kitchen, with single draw dishwasher

[For full version visit the website](https://www.assetestateagents.com.au)

**Type** : Apartment  
**Price** : \$ 635,000  
**Building Size** : 95 sqm  
**Land Size** : 95 sqm  
**View** : <https://www.assetestateagents.com.au/sale/nsw/st-george/wollri-creek/residential/apartment/7799623>

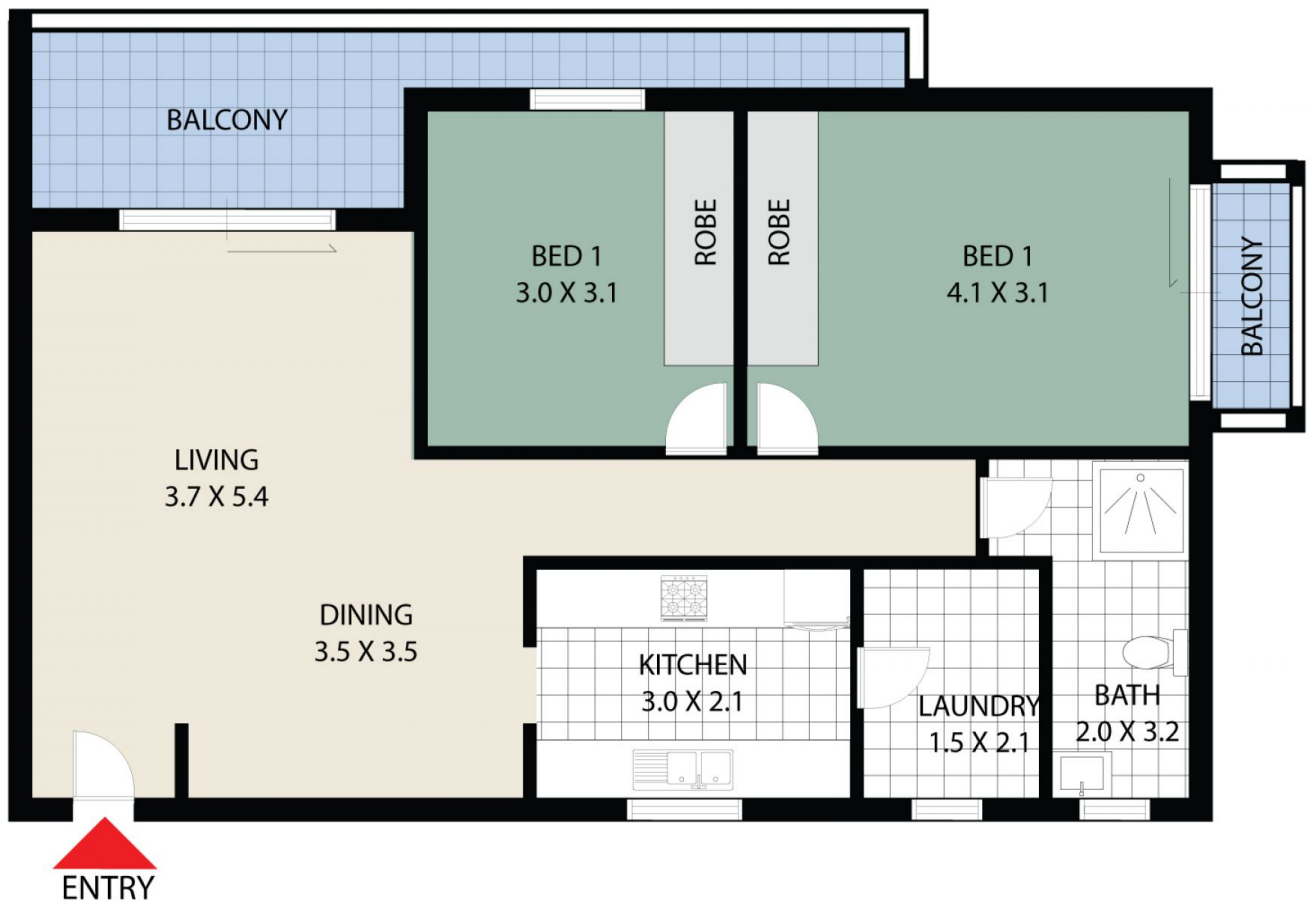
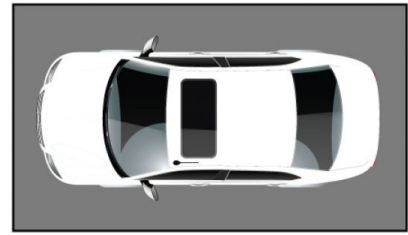


**Jena Chahine**  
02 9597 6787



**Jim Chahine**  
02 9597 6787

LOCK UP GARAGE



## FLOOR PLAN



# 9/23 Ann Street, Wollri Creek

**ASSET** ESTATE AGENTS

NOT TO SCALE, ALL MEASUREMENTS ARE APPROXIMATE METRES, DRAWN FOR PRESENTATION PURPOSES ONLY  
DISCLAIMER: While care has been taken in the preparation of these particulars, no responsibility is accepted for the accuracy of the whole or any part and interested persons are advised to make their own enquiries and satisfy themselves in all respects.